



What does a "4" level look like? HIGHLY EFFECTIVE ART WORK

COLOR: Primary, Secondary and Intermediate Colors, tints and shades
Excellent color skills.

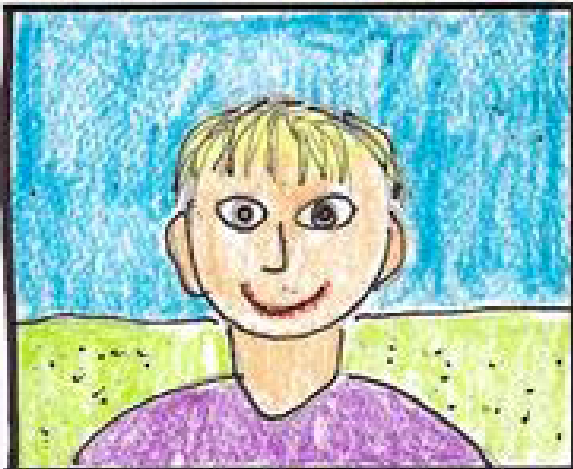
TEXTURE: 5 or more textures, how something looks like it feels.

VALUE: Light and darks of a color, different greens, reds, etc.

SPACE: Overlapping, things smaller in the background, middle ground area, large objects in foreground.

LINE: 5 or more line designs: wavy, curve, straight, zig zag, horizontal, vertical etc.

SHAPE: 5 or more Geometric and Organic shapes (each).



What does a "3" level look like? EFFECTIVE ART WORK

COLOR: Primary, Secondary colors, no tints and shades

TEXTURE: less than 5 textures, how something looks like it feels.

VALUE: One value of a color, the lights and darks of a color.

SPACE: Overlapping, but a limited sense of space.

LINE: Less than 5 line designs: wavy, curve, straight, zig zag, horizontal, vertical etc.

SHAPE: Less than 5 Geometric and Organic shapes (each).



What does a "2" level look like? DEVELOPING ART WORK

COLOR: Basic coloring skills, no tints and shades, Little originality/creativity use of color

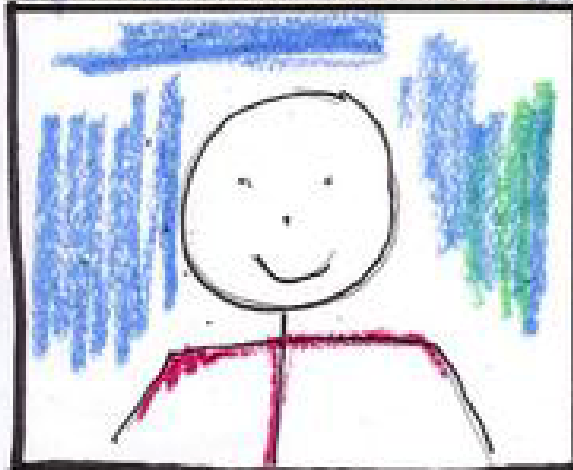
TEXTURE: no textures, how something looks like it feels.

VALUE: One value of a color, no lights and darks of a color.

SPACE: No overlapping, a limited sense of space.

LINE: Less than 5 line designs: wavy, curve, straight, zig zag, horizontal, vertical etc.

SHAPE: Basic Geometric and Organic shapes (circle, triangle, rectangle, square).



What does a "1" level look like? INEFFECTIVE ART WORK

COLOR: weak coloring skills, no tints and shades, Little originality/creativity use of color

TEXTURE: no texture, how something looks like it feels.

VALUE: One value of a color, no lights and darks of a color.

SPACE: No overlapping, all objects on the same line of space.

LINE: Less than 5 line designs: wavy, curve, straight, zig zag, horizontal, vertical etc.

SHAPE: Basic Geometric and Organic shapes (circle, triangle, rectangle, square).